



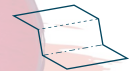
Le beignet de titiri

steric

Réalise
tes
papertoys



1. Découpe selon
les traits pleins



2. Plie selon les
traits pointillés



3. Pré-assemble les éléments
avant de les coller pour bien voir
comment ils s'adaptent



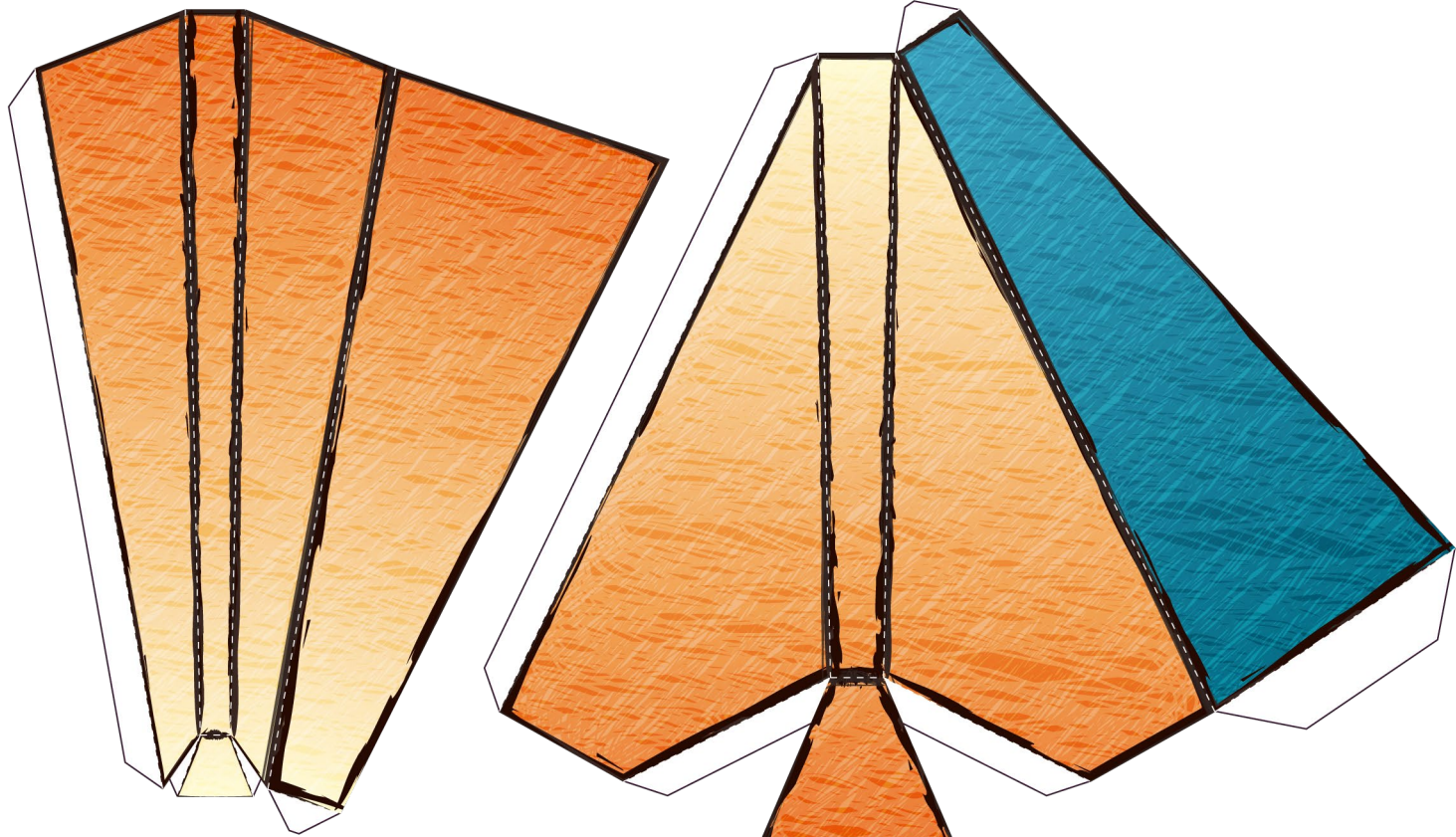
4. Assemble les éléments
en collant les languettes



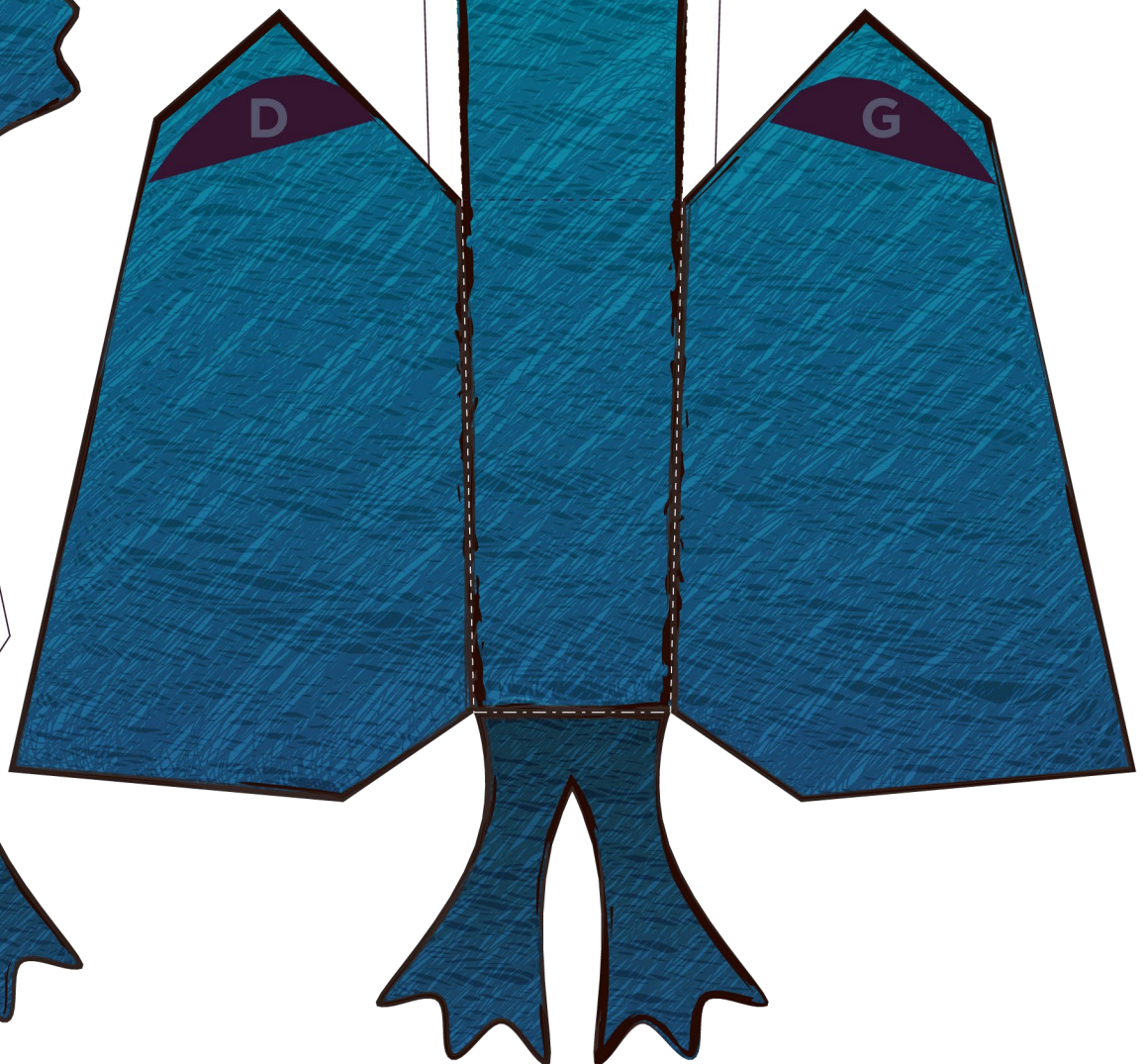
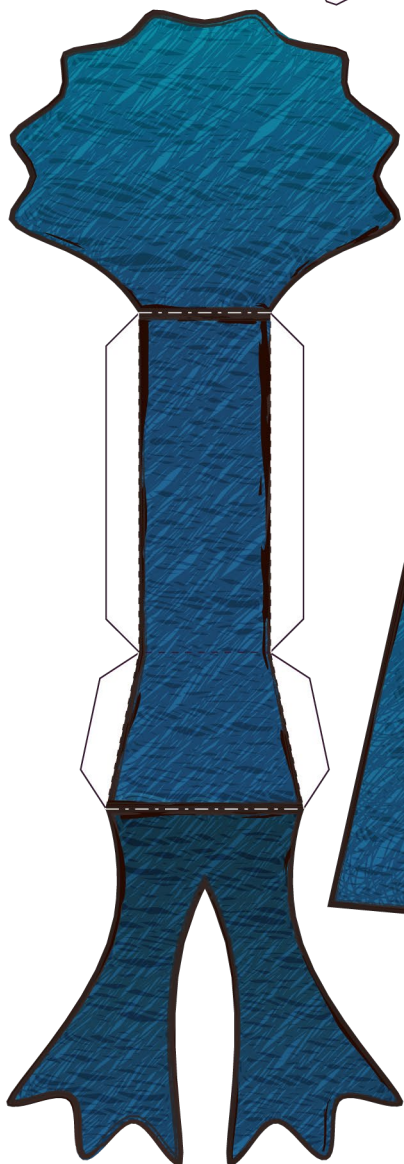
Ces papertoys sont sous licence Creative Commons
Attribution - Pas d'Utilisation Commerciale - Partage dans les Mêmes Conditions 4.0 International.
<http://creativecommons.org/licenses/by-nc-sa/4.0/>

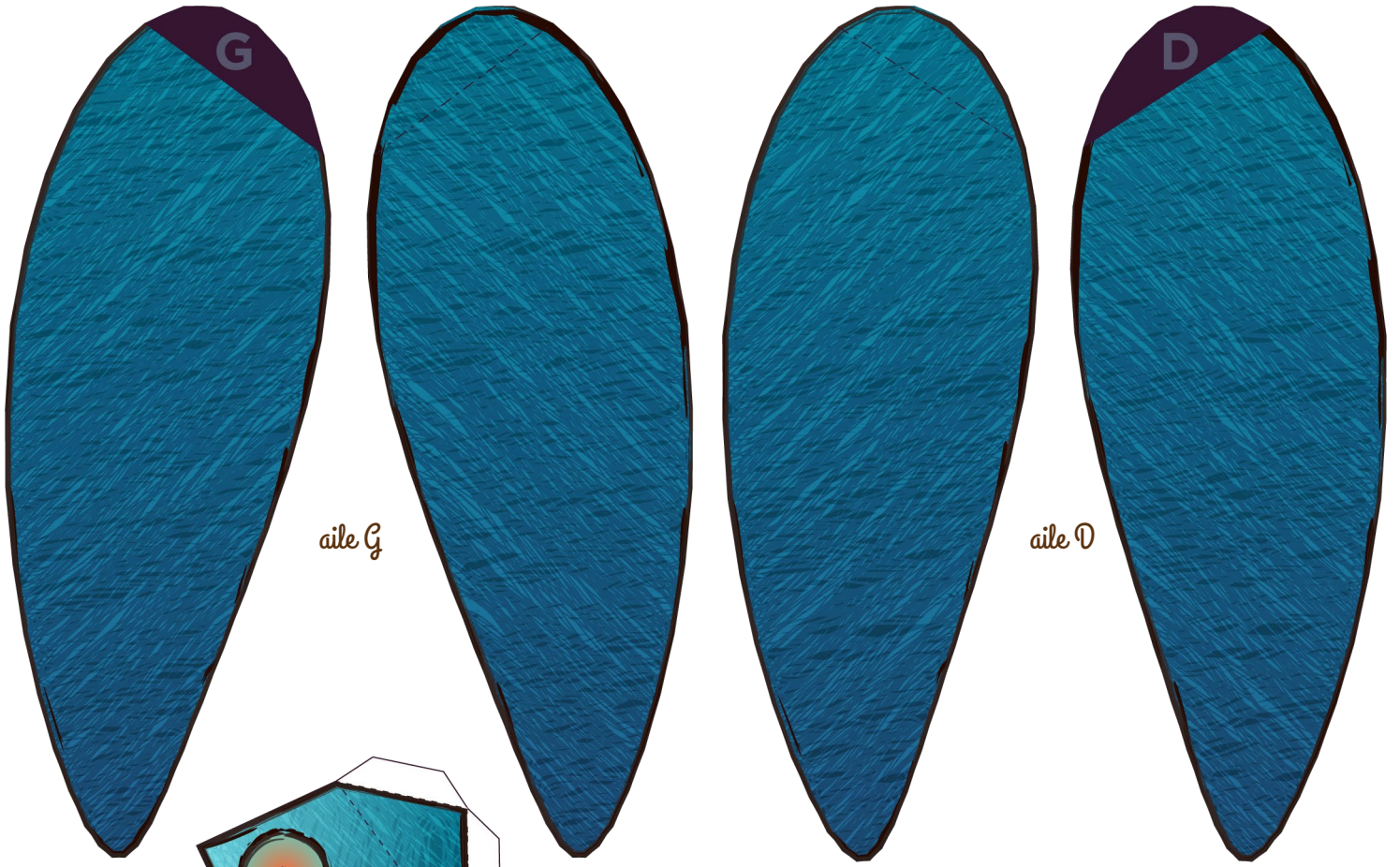
design et modèles créés par steric
www.gandoli.blue





Pélican 1

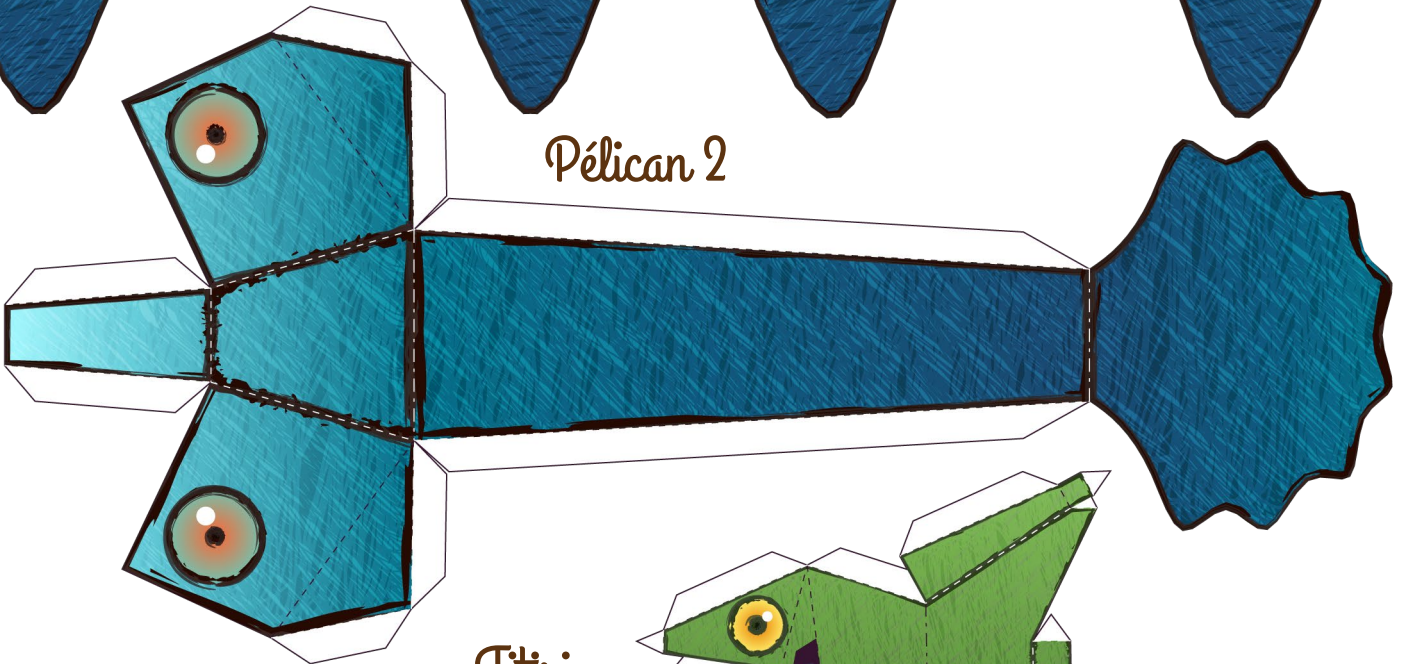




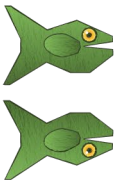
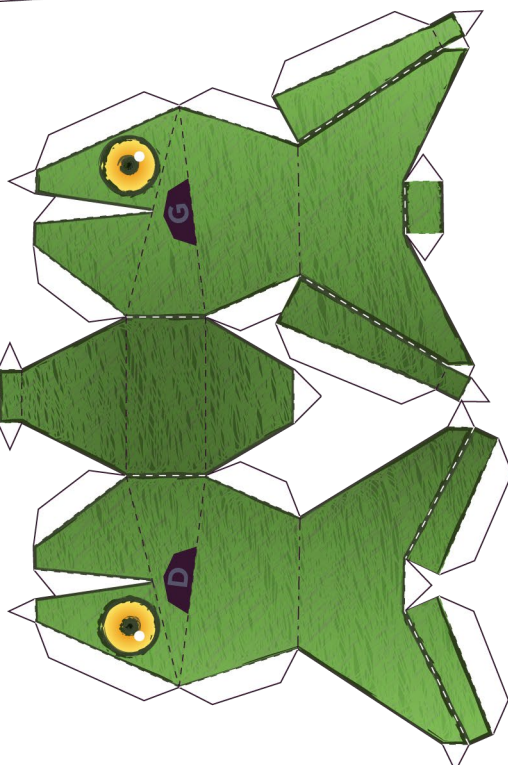
aile G

aile D

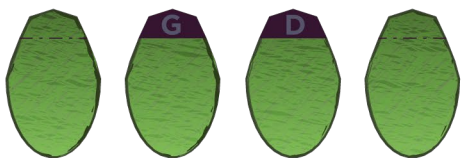
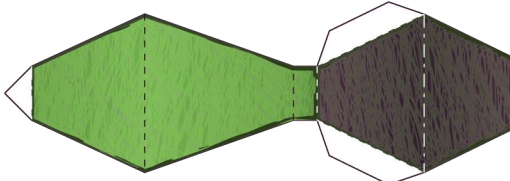
Pélican 2



Titiri
échelle 4:1

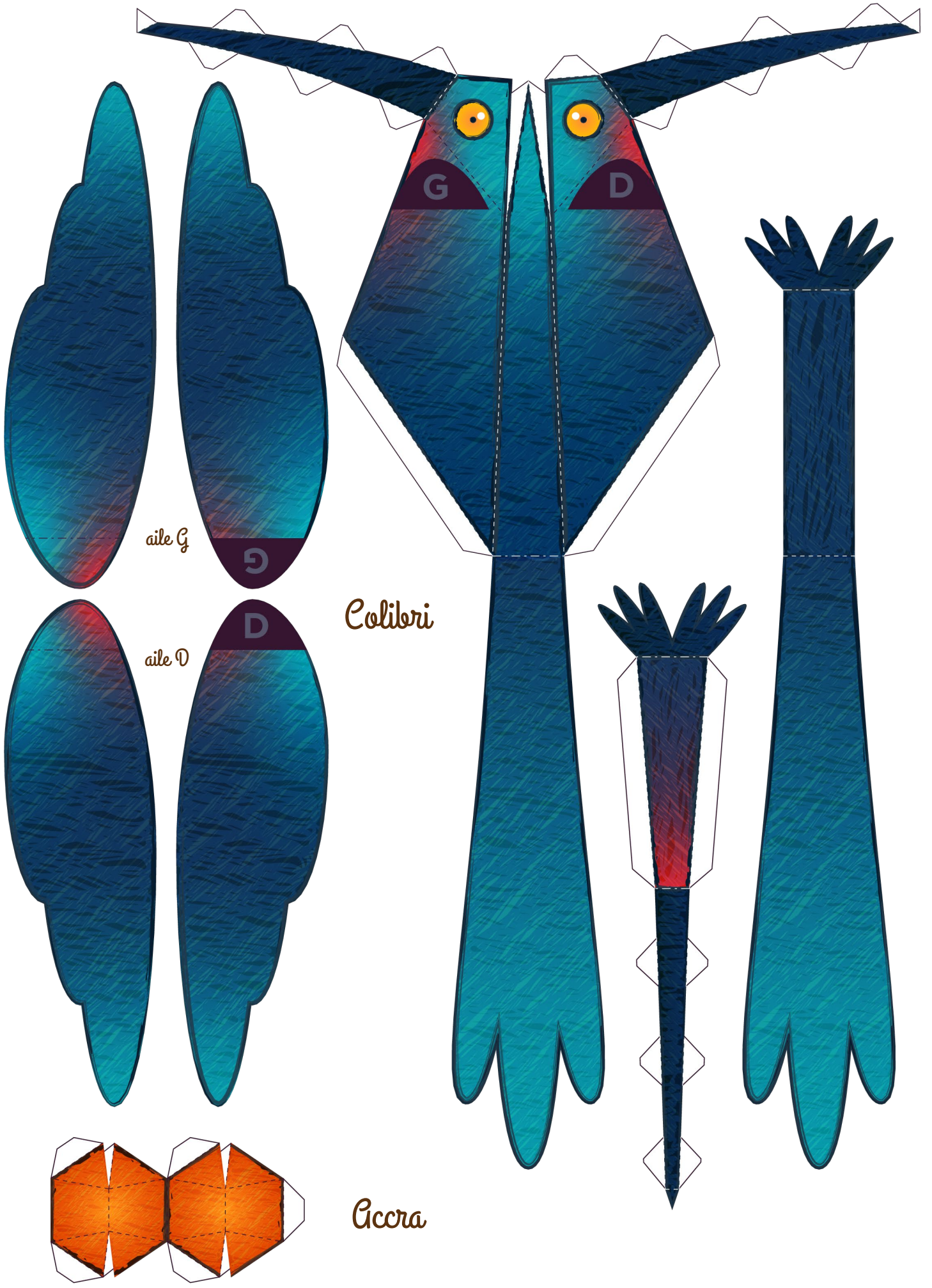


Titiri
échelle 1



nageoire G

nageoire D



ail G

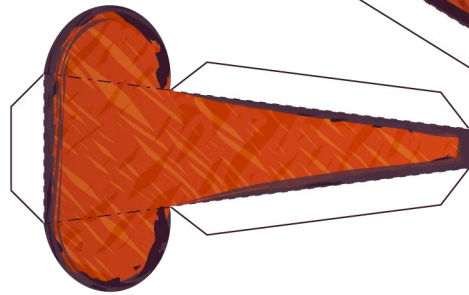
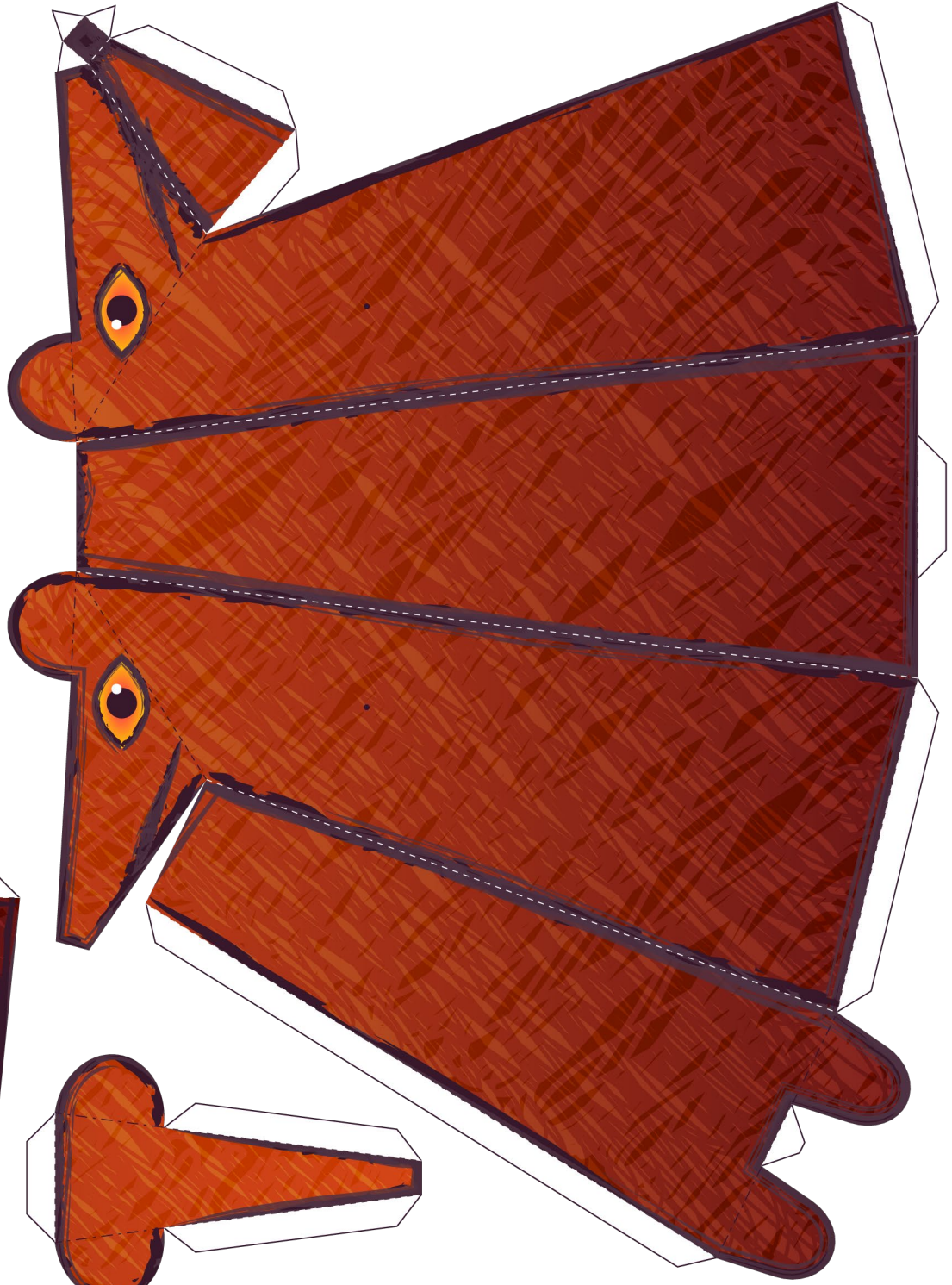
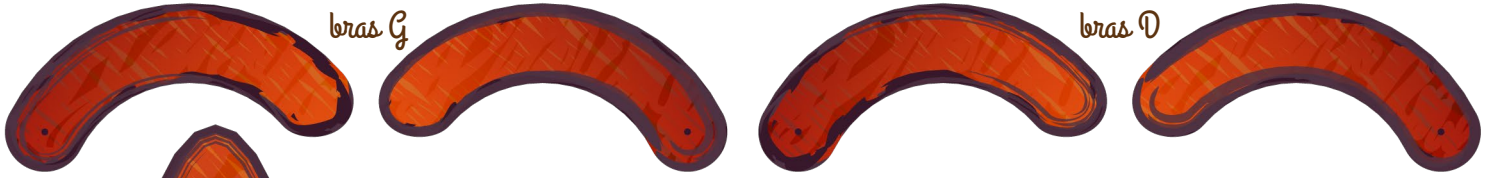
G

ail D

D

Colibri

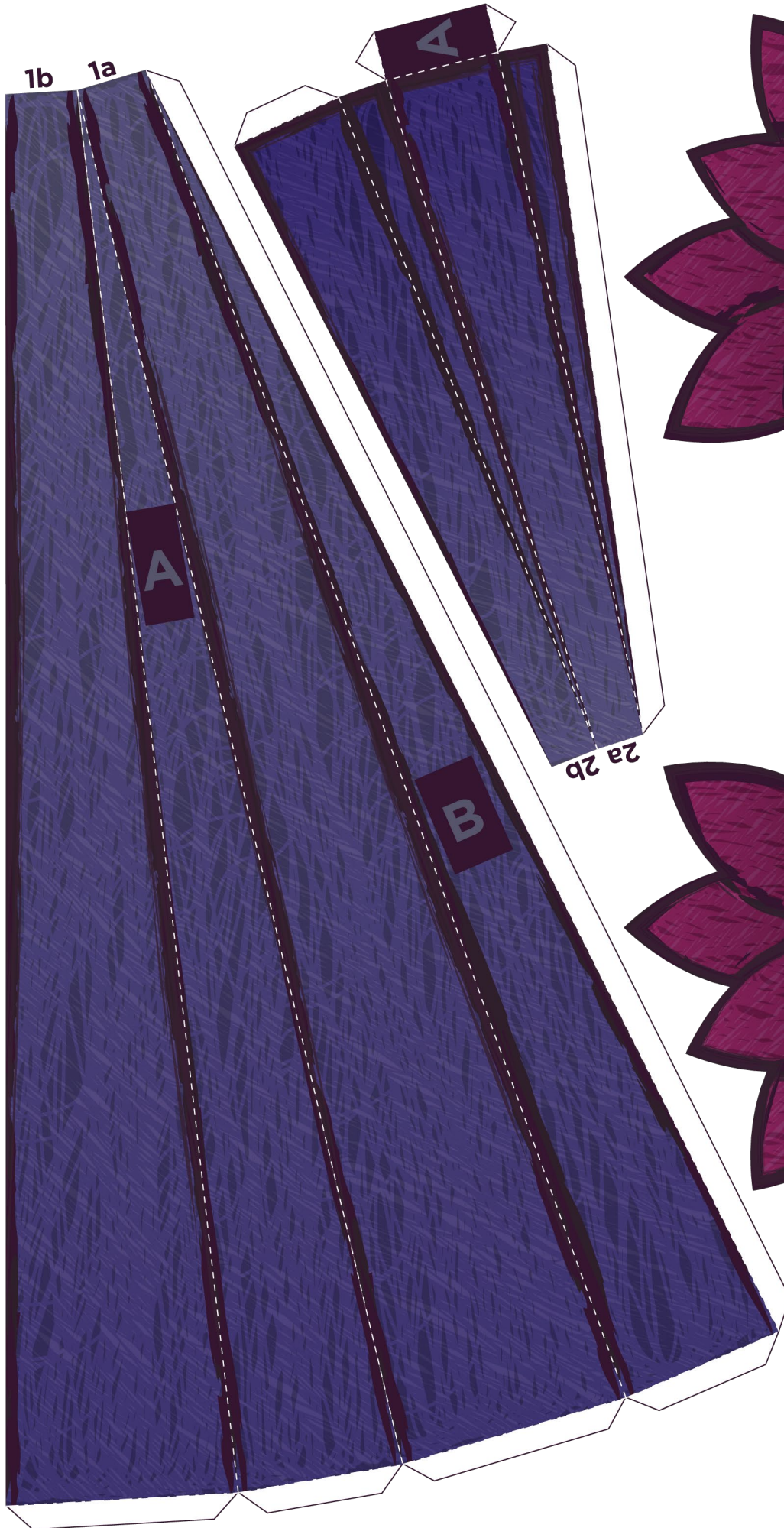
Cocra



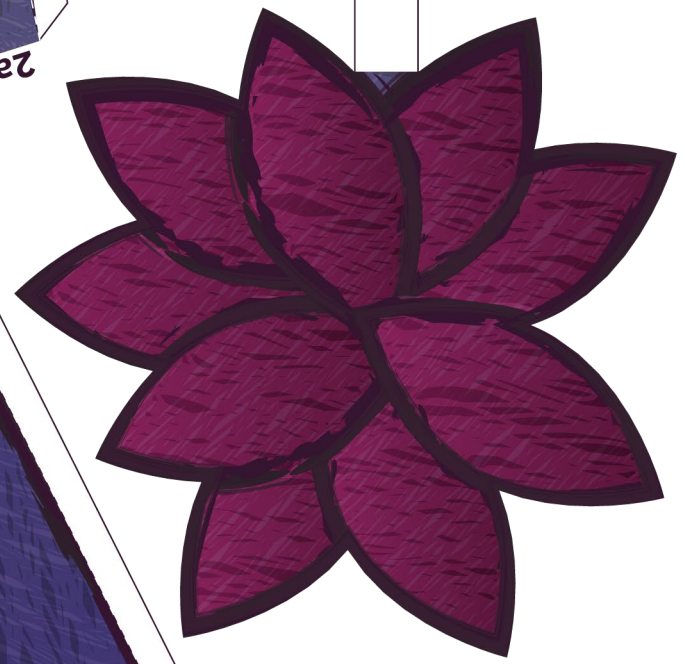
Mangouste



Fromager 1

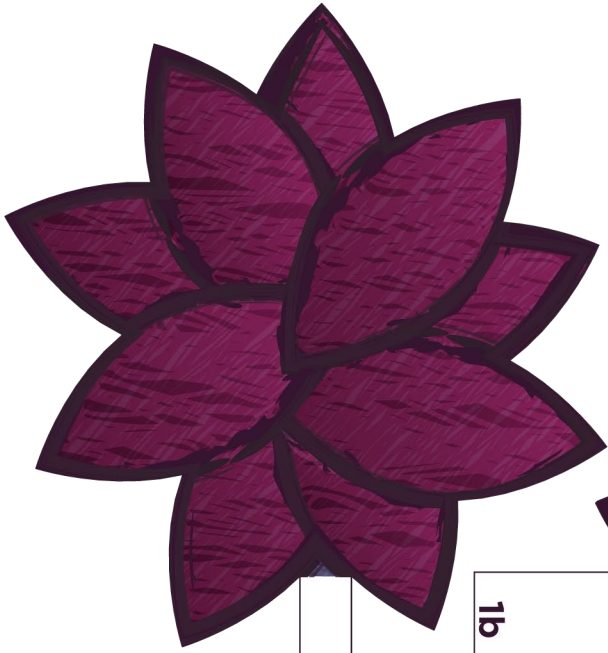


2b



2a

Fromager 2



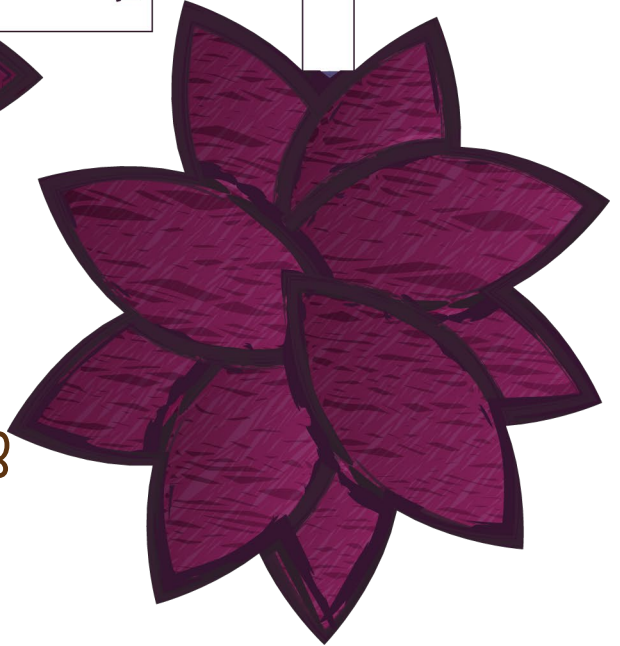
3b



1b



1a



3a

Fromager 3